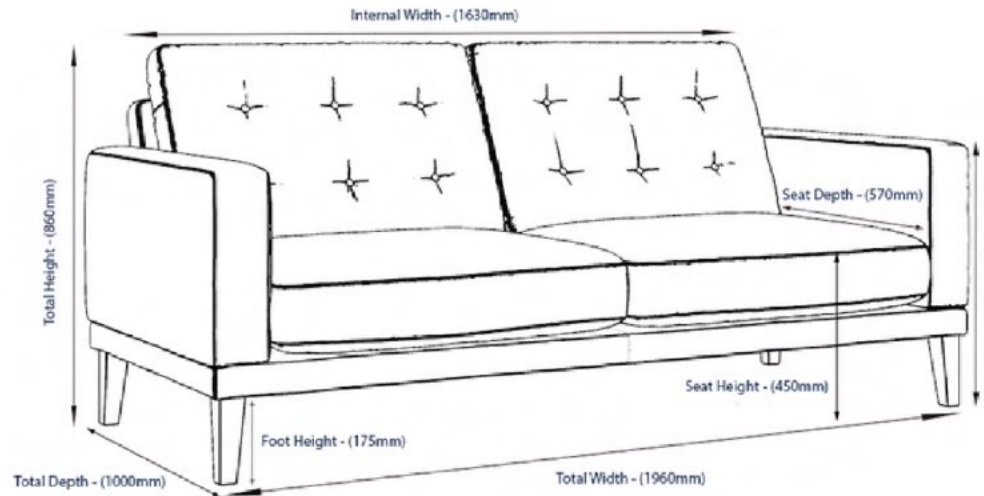




THE FITZROY COLLECTION



FITZROY 3-SEAT SOFA

Style: Mid century look and feel

Comfort: Medium-to-soft supportive 'sit' with standard height buttoned back cushions

Filling: Medium density foam with a high quality fibre wrap

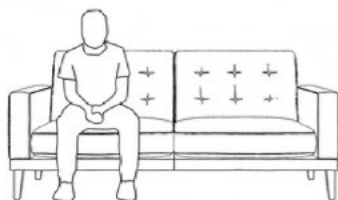
Frame construction: Combination of ply and birch solid wood, glued and screwed for a robust build that's made to last

Legs: Tapered, solid beech wood mid brown finish

Fabrics: Available in Bouclé or Eco EasyClean Velvet

Frame guarantee: 10 years

Model's height: 180 cm



MADE TO ORDER
DELIVERED IN 10 - 12 WEEKS



Dimensions	Four Seater	Three Seater	Loveseat	Armchair
Total Width	215 cm	196 cm	126 cm	98 cm
Seat Width	182 cm	163 cm	93 cm	65 cm
Total Height	86 cm	86 cm	86 cm	86 cm
Arm Height	64 cm	64 cm	64 cm	64 cm
Seat Height	45 cm	45 cm	45 cm	45 cm
Total Depth	100 cm	100 cm	100 cm	100 cm
Seat Depth	57 cm	57 cm	57 cm	57 cm

FABRICS

BOUCLÉ

Textured, tactile and totally gorgeous.

Our bouclé fabric is hard wearing, and the perfect choice for an on trend sofa or statement armchair.

Fabric composition:

96% Polyester 4% Acrylic

Fabric rub count: 60 000+

ECO EASYCLEAN VELVET

Low maintenance and luxurious.

Our 100% Eco Easyclean Velvet is made from recycled plastic bottles.

Easyclean finish means it's water resistant so it doesn't let liquids soak straight in, plus it's machine washable and dry-cleanable.

Fabric composition:

Pile: 100% Polyester

Back: 75% Modacrylic 20% Cotton 5% FR Polyester

Fabric rub count: 100,000

This is an EasyClean fabric.

FABRICS

BOUCLÉ



Ivory



Fern

ECO-VELVET



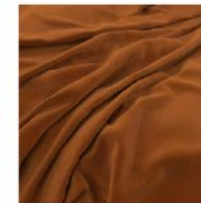
Hunter



Indigo



Mallard



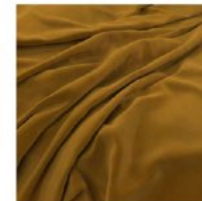
Burnt



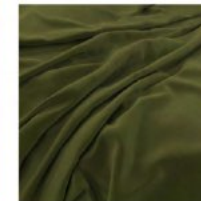
Bone



Airforce



Turmeric



Vine

