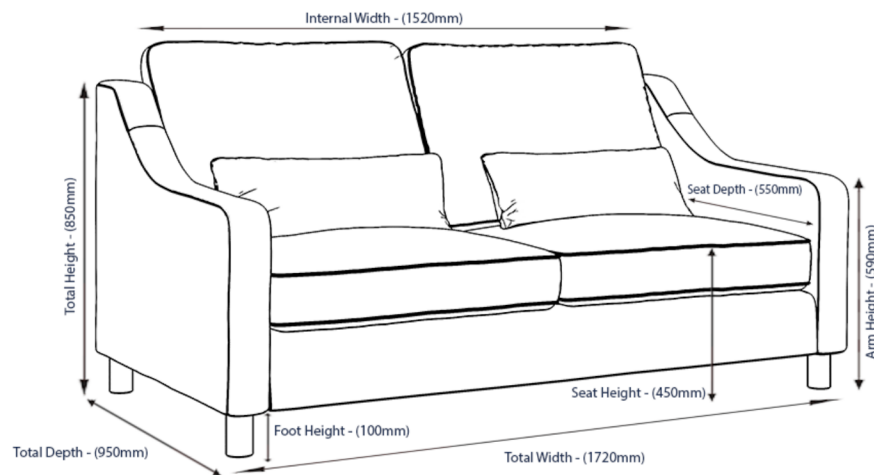




THE HAMPTON COLLECTION



HAMPTON 3-SEAT SOFA

Style: Classic, elegant design

Comfort: Medium-to-soft 'sit' with comfortable high back cushions, and supportive scatter cushions

Filling: Medium density foam with a high quality fibre wrap

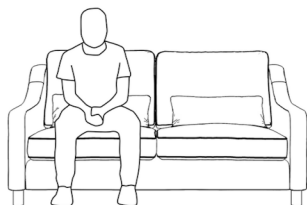
Frame construction: Combination of ply and birch solid wood, glued and screwed for a robust build that's made to last

Legs: Solid beech wood, mid brown finish

Fabrics: Available in Bouclé or Eco EasyClean Velvet

Frame guarantee: 10 years

Model's
height: 180 cm



MADE TO ORDER
DELIVERED IN 10- 12 WEEKS



Dimensions	Four Seater	Three Seater	Loveseat	Armchair
Total Width	200 cm	172 cm	112 cm	77 cm
Seat Width	180 cm	152 cm	92 cm	56 cm
Total Height	85 cm	85 cm	85 cm	85 cm
Arm Height	59 cm	59 cm	59 cm	59 cm
Seat Height	45 cm	45 cm	45 cm	45 cm
Total Depth	95 cm	95 cm	95 cm	95 cm
Seat Depth	55 cm	55 cm	55 cm	55 cm

FABRICS

BOUCLE

Textured, tactile and totally gorgeous.

Our bouclé fabric is hard wearing, and the perfect choice for an on trend sofa or statement armchair.

Fabric composition:

96% Polyester 4% Acrylic

Fabric rub count: 60 000+

ECO EASYCLEAN VELVET

Low maintenance and luxurious.

Our 100% Eco Easyclean Velvet is made from recycled plastic bottles.

Easyclean finish means it's water resistant so it doesn't let liquids soak straight in, plus it's machine washable and dry-cleanable.

Fabric composition:

Pile: 100% Polyester

Back: 75% Modacrylic 20% Cotton 5% FR Polyester

Fabric rub count: 100,000

This is an EasyClean fabric.

FABRICS

BOUCLE

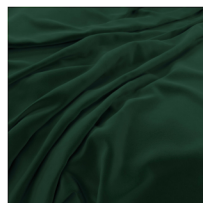


Ivory

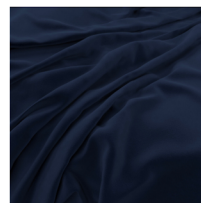


Fern

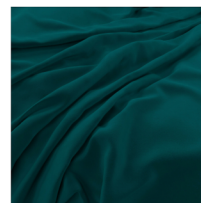
ECO-VELVET



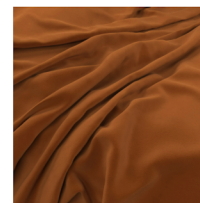
Hunter



Indigo



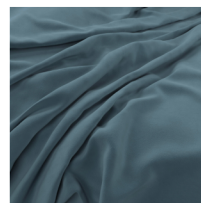
Mallard



Burnt



Bone



Airforce



Turmeric



Vine

